



Holyport Stores Maidenhead

Offers in excess of £360,000 Freehold

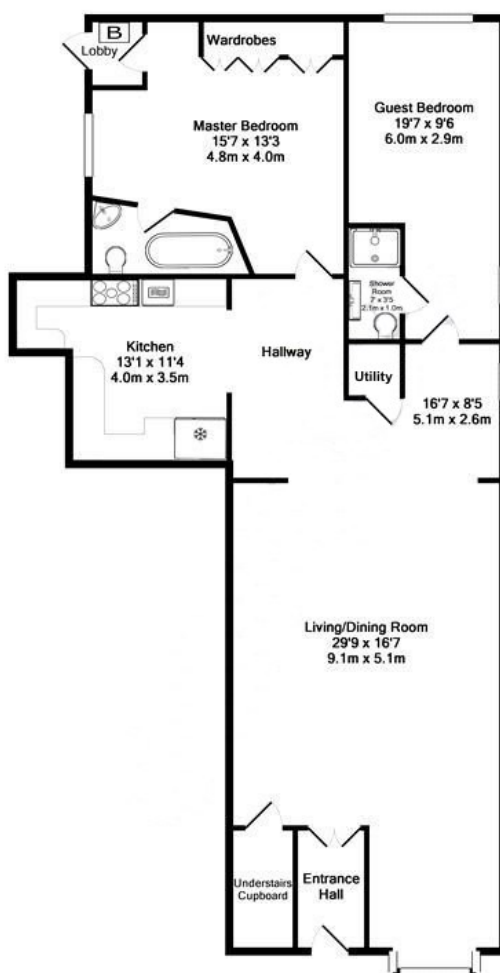
Holyport Stores, Ascot Road, Holyport Berkshire, SL6 2HY

Price: Offers in excess of £360,000 Freehold

A particularly spacious (over 1200 sq. ft. ground floor maisonette in the heart of this picturesque village two miles from Maidenhead town and station. The property has been converted from a pretty period building and is very well appointed throughout with the benefit of two single garages, parking for several cars and is being sold with the freehold of the building.

The M4 and M40 motorway are easily accessible providing access to Heathrow and Central London. Rail services to London Paddington are available from Maidenhead Station with an excellent service to London Paddington and directly into the city centre via the Elizabeth Line.

EPC Rating: C Council Tax Band : C



Ground Floor Flat, Holyport
Total Approx. Floor Area 1202 Sq Ft. (111.7 Sq.M.)
Measurements are approximate. Not to scale. Illustrative purposes only.
Made with Metropix ©2011







DIRECTIONS: From Maidenhead town centre proceed south along the Braywick/Windsor Road (A308) and at the end of the dual carriageway take third exit off the roundabout onto the Ascot Road(A330) .Proceed along here for just under a mile and the property is on the right hand side just before the village green.



PIKE SMITH & KEMP

22 QUEEN STREET, MAIDENHEAD, BERKSHIRE SL6 1HZ

MAIDENHEAD@PIKESMITHKEMP.CO.UK

www.pskweb.co.uk

01628 621177